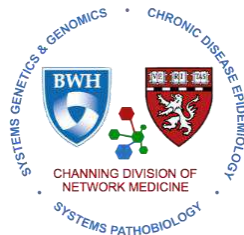




Mahidol University
Faculty of Medicine
Siriraj Hospital



Genetics and Integrative Approaches in Chronic Obstructive Pulmonary Disease

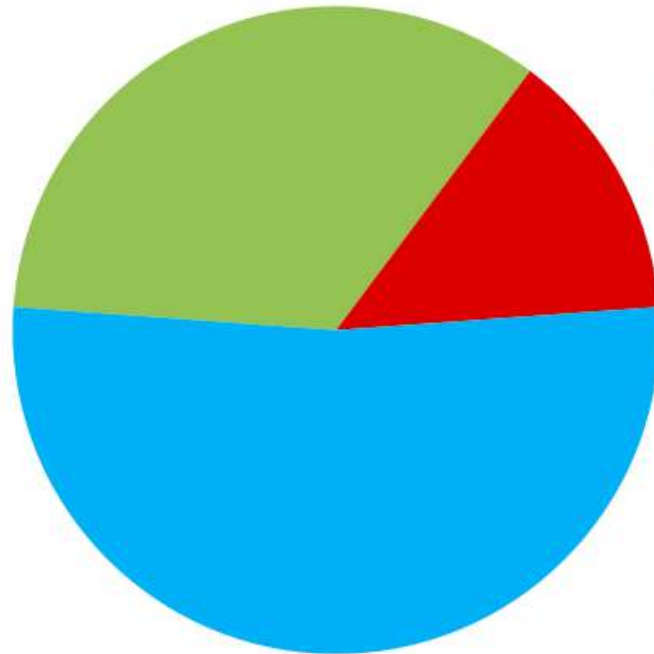
Phuwanat Sakornsakolpat, MD

Faculty of Medicine Siriraj Hospital, Mahidol University

Channing Division of Network Medicine, Brigham and Women's Hospital

Introduction

Communicable
maternal, perinatal and
nutritional conditions
34%

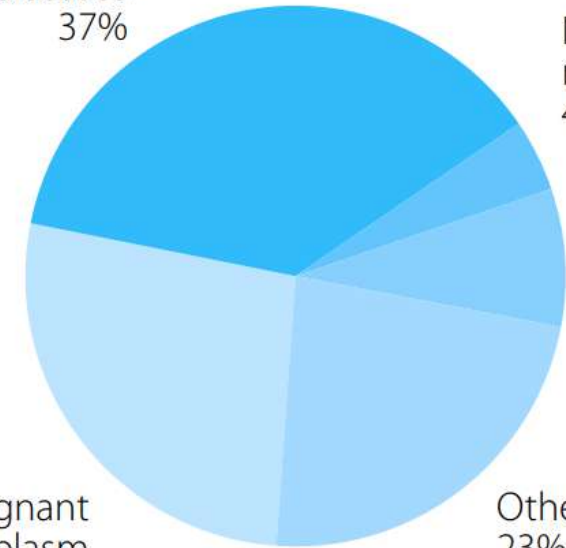


Injuries
14%

NCDs
52%

Proportion of global deaths under the age 70 years, by cause of death, comparable estimates, 2012

Cardiovascular
diseases
37%



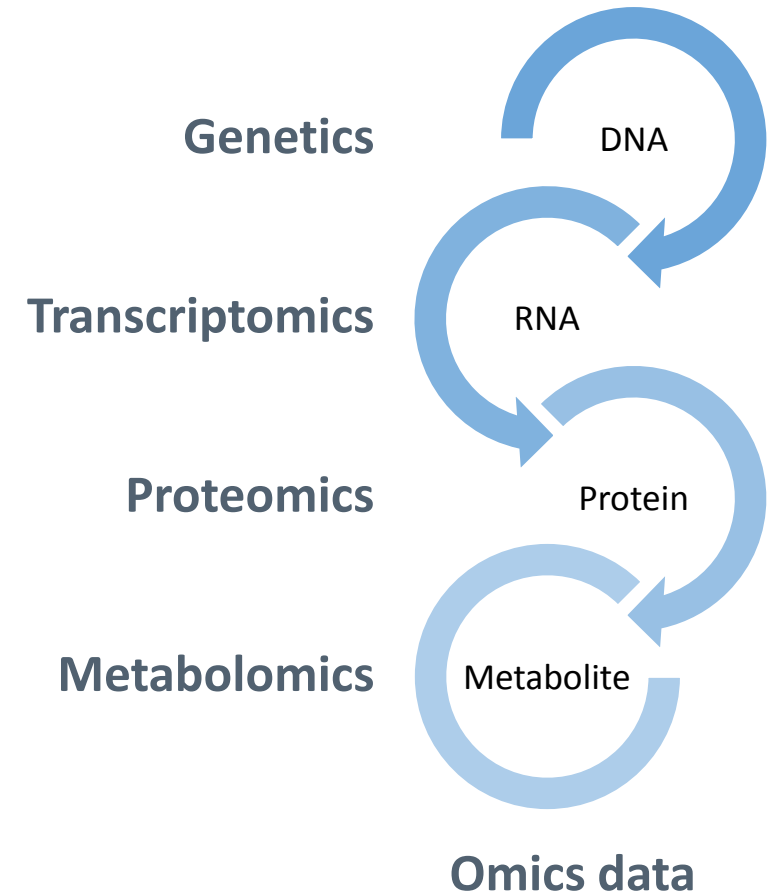
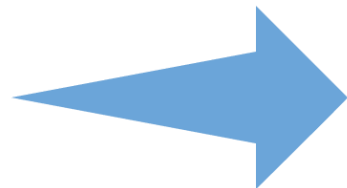
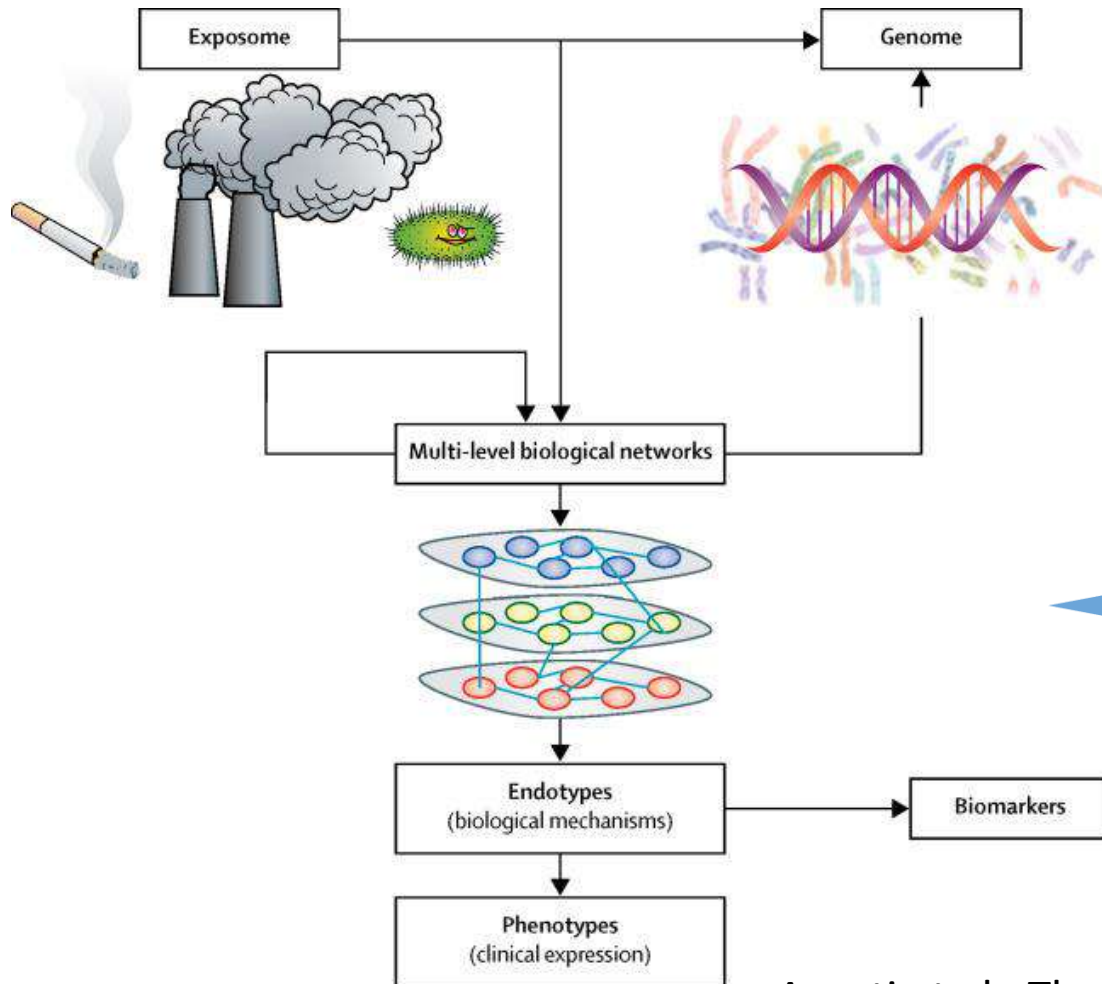
Diabetes
mellitus
4%

Respiratory
diseases
8%

Other NCDs
23%

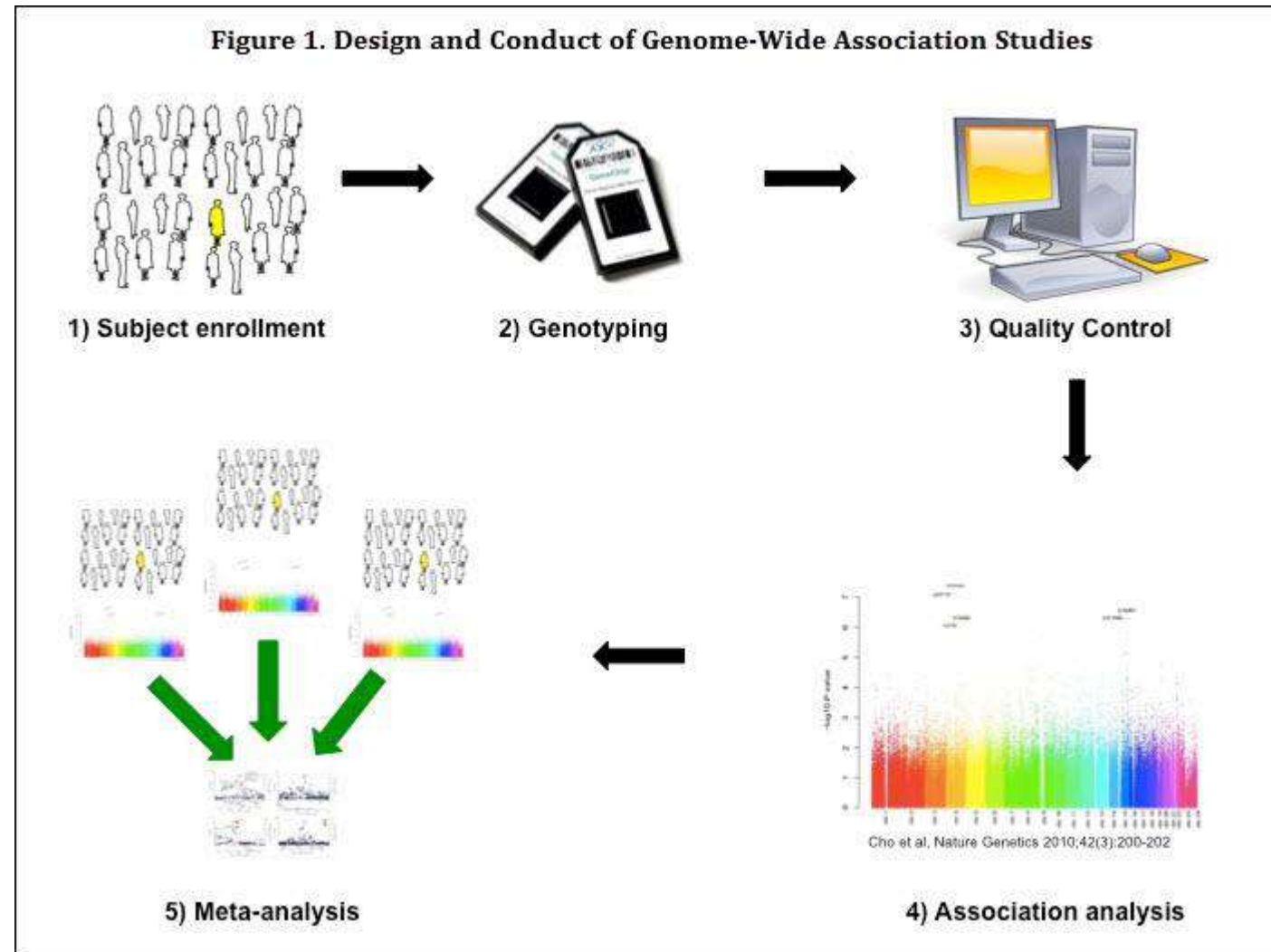
Malignant
neoplasm
27%

Associations between genes, environment, endotypes, biomarkers, and phenotypes

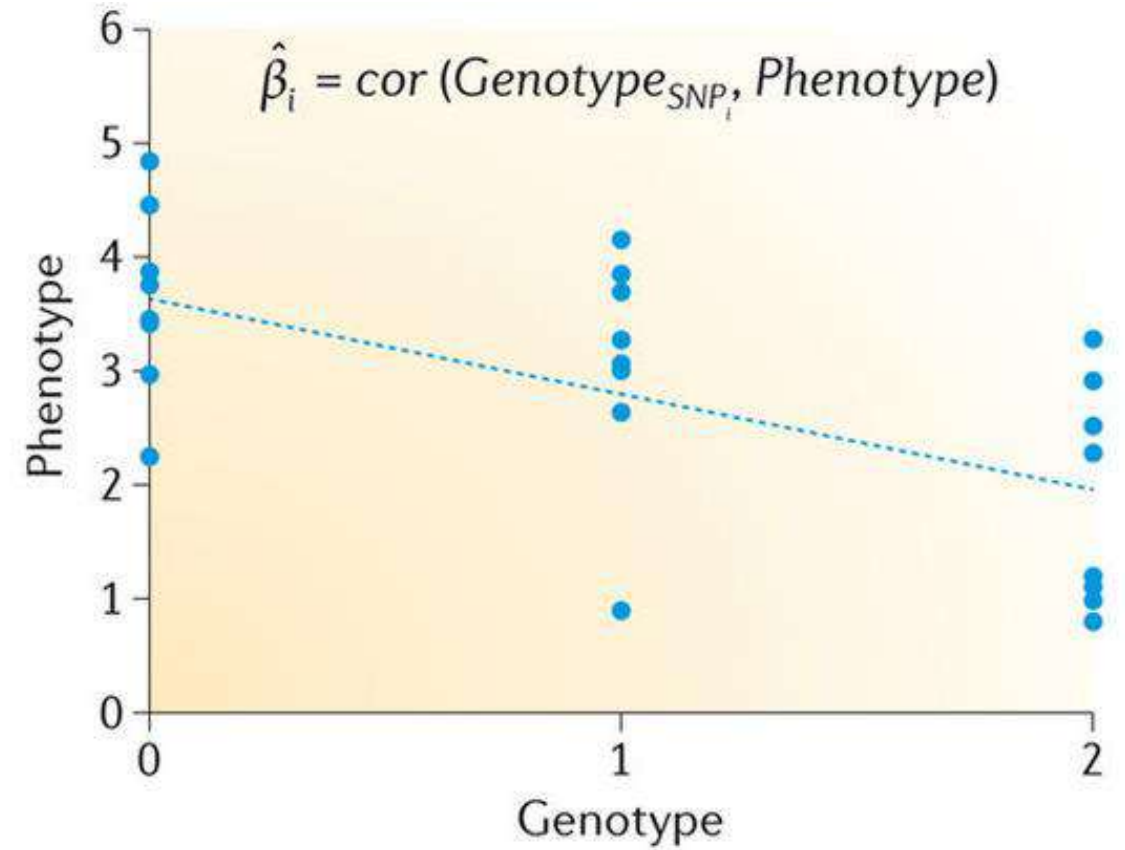
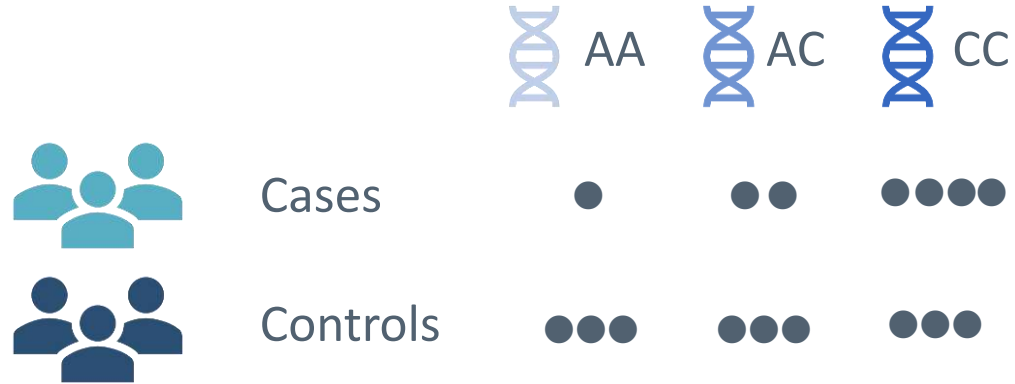


Agusti et al., The Lancet, 2017.

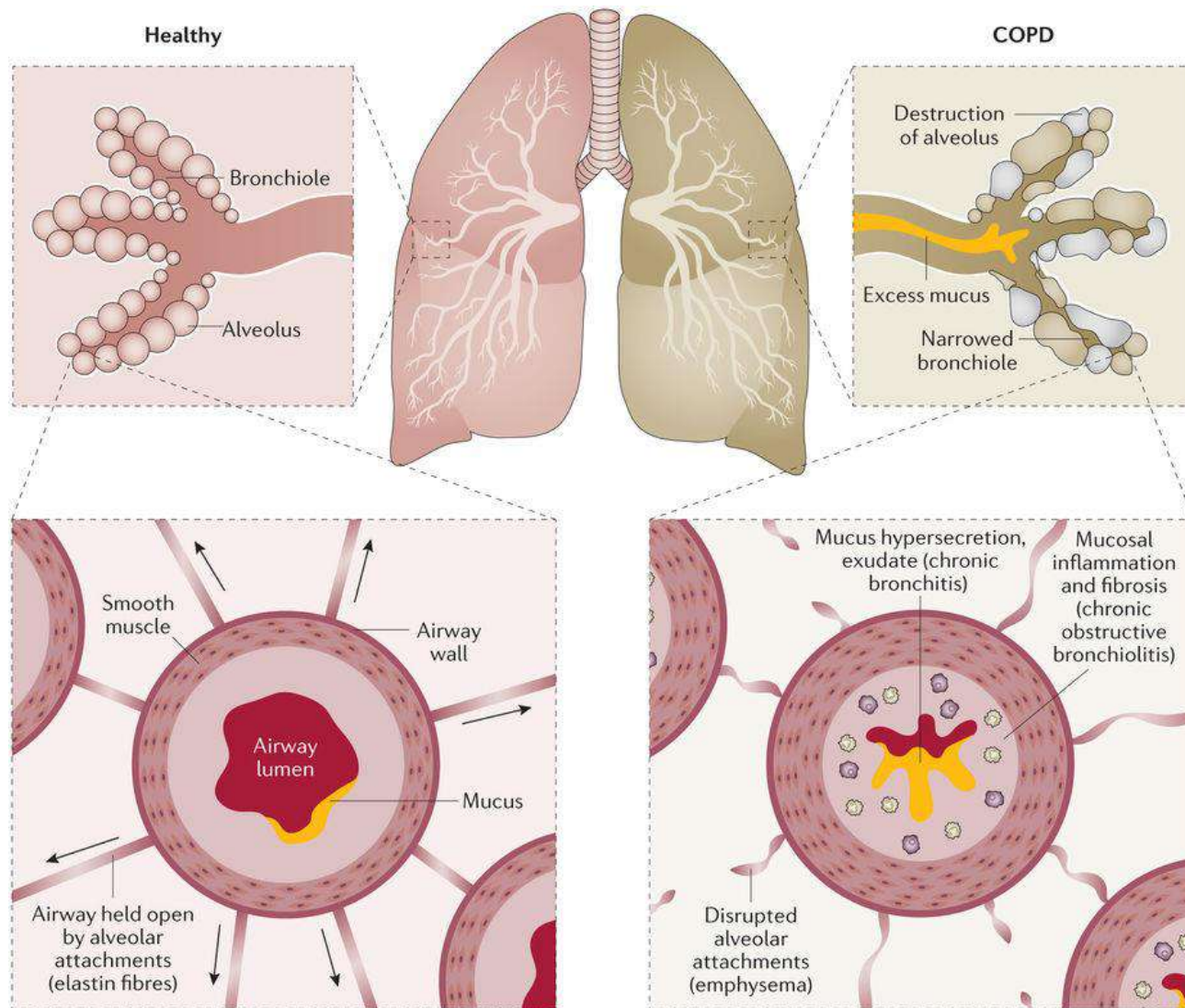
Genome-wide association studies



Genome-wide association studies

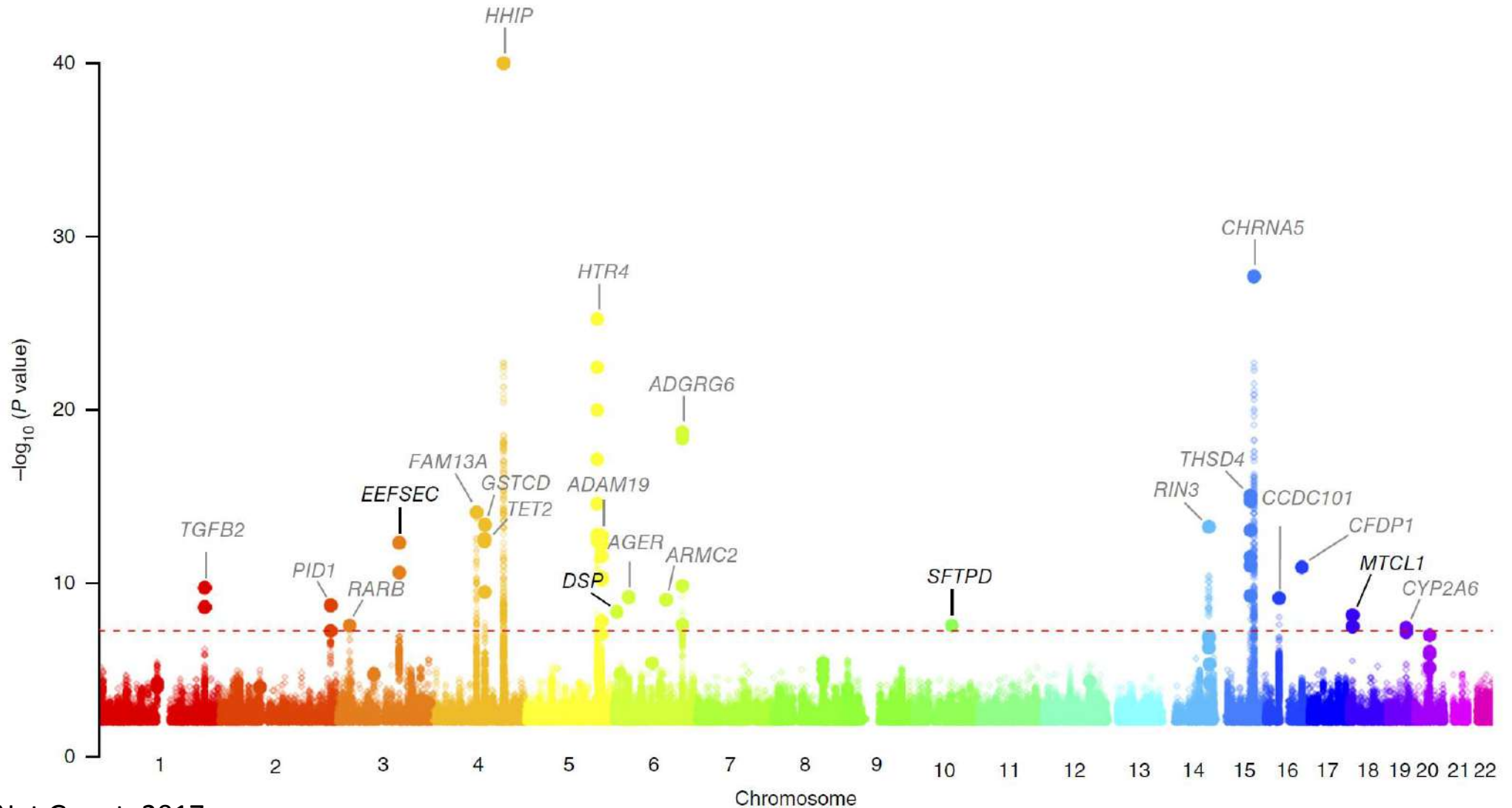


Chronic Obstructive Pulmonary Disease

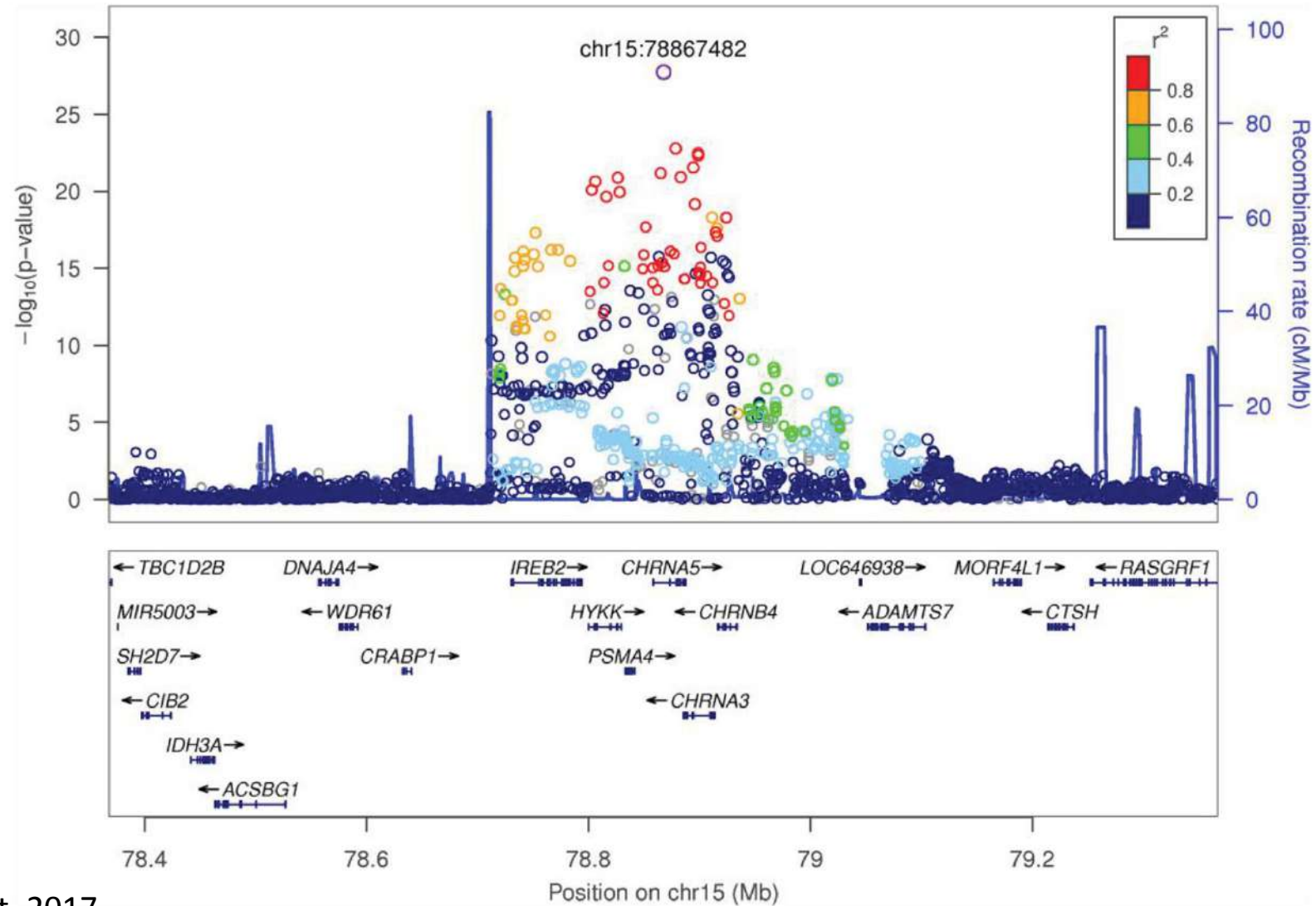


- **Inflammation, fibrosis, and destruction of small airways**
-> narrowed airways
- **disruption of alveolar attachments**
-> emphysema
- **mucus and inflammatory exudate**
-> luminal occlusion

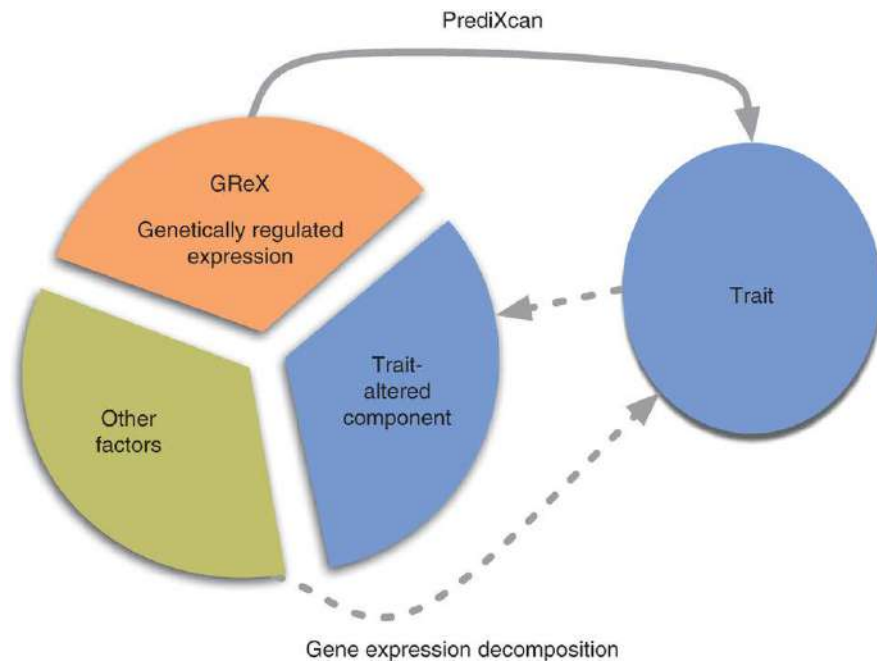
Recent GWAS and meta-analysis of COPD



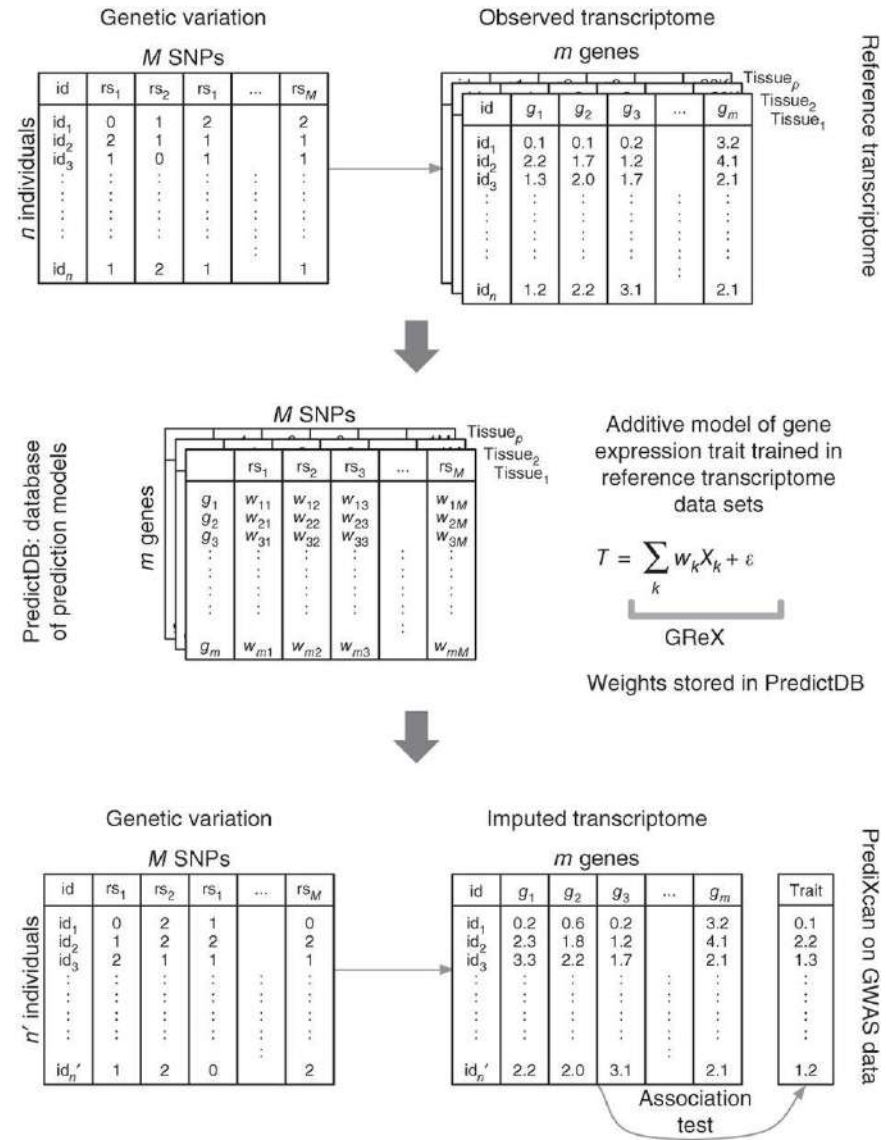
Regional association plot (chr15q25.1 locus)



TWAS Machinery



Gamazon, et al. Nat Genet, 2015.



Our GWAS and Transcriptome DBs

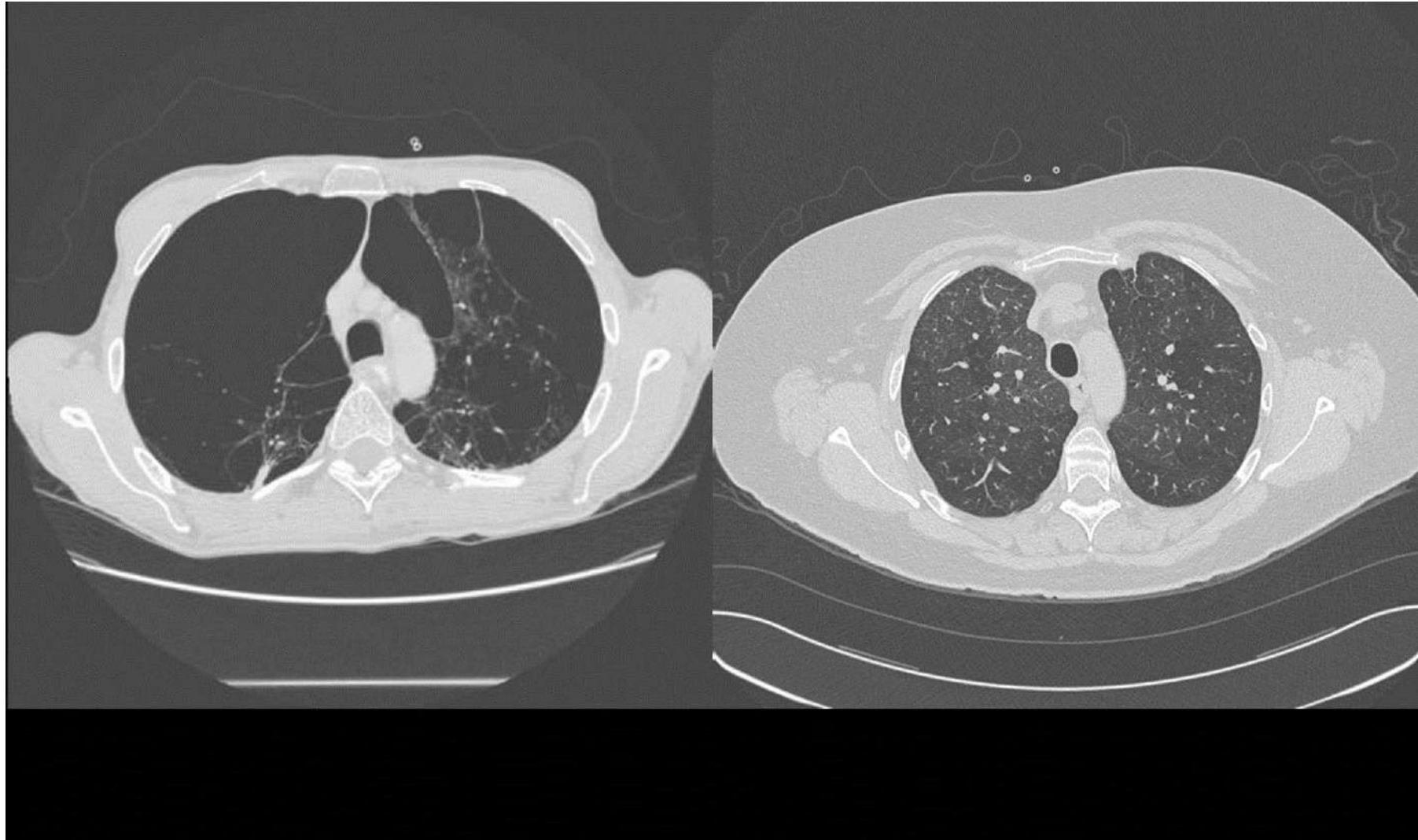
GWASs from COPDGene + ECLIPSE + NETT/NAS + GenKOLS

- **Severe COPD** (3,497 cases and 5,704 controls)
- **Quantitative emphysema** (12,031 individuals)
 - %LAA-950 ↑ with more emphysema
 - Perc15 ↓ with more emphysema

Expression data (eQTL and prediction models)

- **Discovery**
 - DGN-Blood
 - GTEx-Lung
- **Validation**
 - GTEx-Blood
 - Lung-eQTL Consortium

CT Scans of Two Boston EOCOPD Study Probands (Craig Hersh)

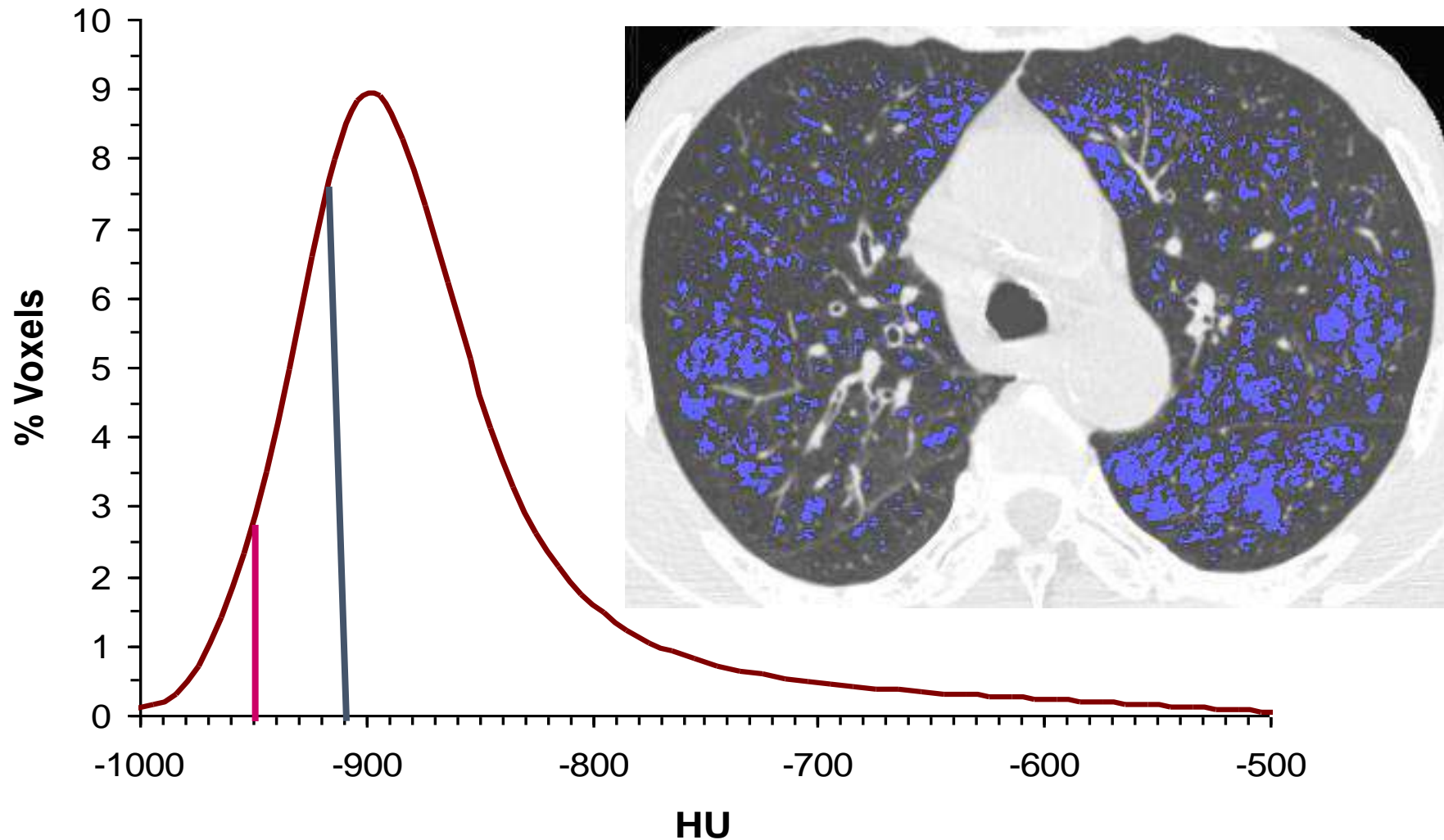


Age 42, FEV1 38%

Age 47, FEV1 20%

Courtesy of Dr. Edwin Silverman

Quantification of Emphysema



Hayhurst Lancet 1984, Müller Chest 1988, Gould ARRD 1988, Gevenois AJRCCM 1995, Coxson AJRCCM 1999; Slide from H. Coxson

Courtesy of Dr. Edwin Silverman

Our GWAS and Transcriptome DBs

GWASs from COPDGene + ECLIPSE + NETT/NAS + GenKOLS

- **Severe COPD** (3,497 cases and 5,704 controls)
- **Quantitative emphysema** (12,031 individuals)
 - %LAA-950 ↑ with more emphysema
 - Perc15 ↓ with more emphysema

Expression data (eQTL and prediction models)

- **Discovery**
 - DGN-Blood
 - GTEx-Lung
- **Validation**
 - GTEx-Blood
 - Lung-eQTL Consortium

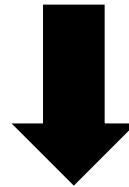
Severe COPD
(3,497 cases and
5,704 controls)

COPDGene
ECLIPSE
NETT/NAS
GenKOLS (Norway)

Quantitative emphysema
%LAA-950 and Perc15
(12,031 individuals)

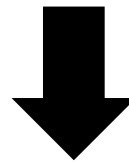
Summary Statistics from GWASs

Transcriptome
References
for **Discovery**



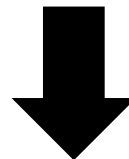
DGN-Blood
GTEx-Lung

Validation using
independent
references



GTEx-Blood
Lung-eQTL Consortium

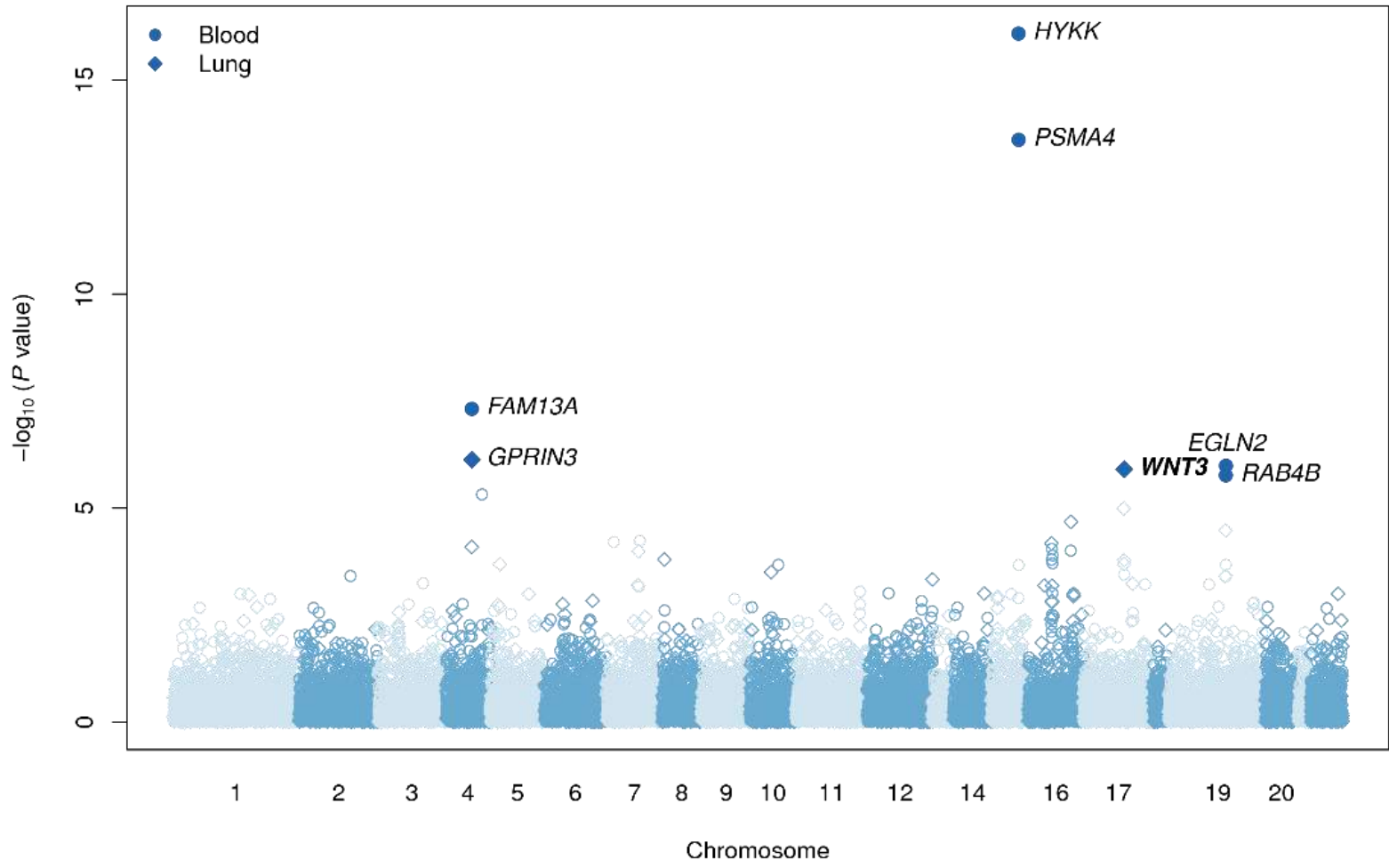
Test for
Colocalization



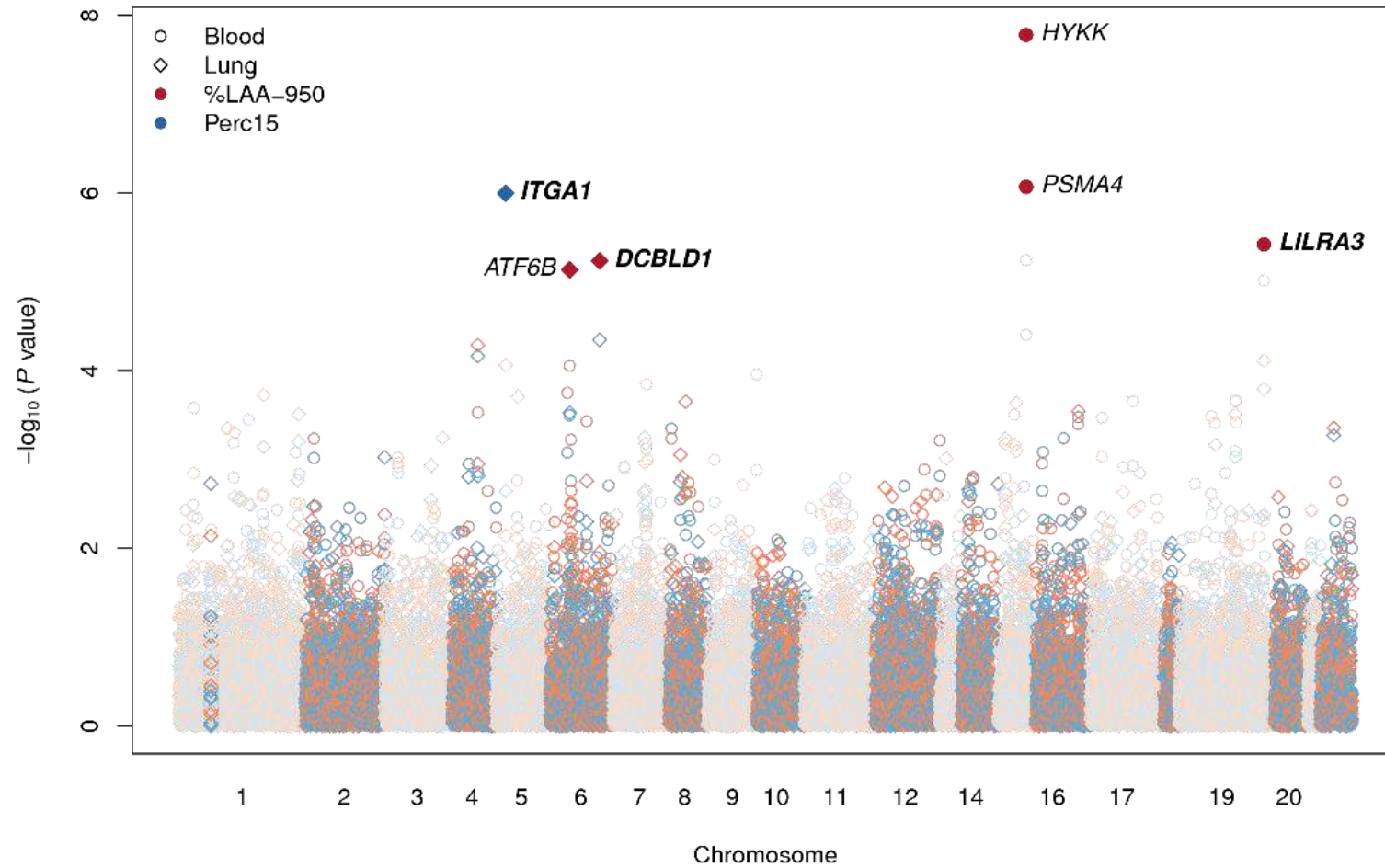
GTEx-Blood
GTEx-Lung
Lung-eQTL Consortium

Transcriptome-Disease Associations

TWAS Findings in Severe COPD



TWAS Findings in Quantitative Emphysema



Validation with Independent expression DBs

Genetic Loci	Phenotype	Gene	Tissue	Discovery		Validation	
				Z score	P value	Z score	P value
6q22	%LAA-950	<i>DCBLD1</i>	Lung	4.53	5.80E-06	3.81	1.40E-04
15q25	Severe COPD	<i>PSMA4</i>	Blood	7.62	2.50E-14	7.57	3.80E-14
15q25	%LAA-950	<i>PSMA4</i>	Blood	4.92	8.50E-07	5.10	3.40E-07
17q21	Severe COPD	<i>WNT3</i>	Lung	4.85	1.20E-06	4.60	4.30E-06
19q13	Severe COPD	<i>EGLN2</i>	Blood	4.89	1.00E-06	4.35	1.30E-05
19q13	Severe COPD	<i>RAB4B</i>	Blood	-4.78	1.70E-06	-3.82	1.30E-04
19q13	%LAA-950	<i>LILRA3</i>	Blood	-4.62	3.80E-06	-4.13	3.60E-05

Co-localization

Locus	Phenotype	Gene	Tissue	Colocalized variant	Colocalization Probability
6q22	%LAA-950	<i>DCBLD1</i>	Lung	rs34882116	0.13
15q25	Severe COPD	<i>PSMA4</i>	Blood	rs56077333	0.46
15q25	%LAA-950	<i>PSMA4</i>	Blood	rs56077333	0.14
17q21	Severe COPD	<i>WNT3</i>	Lung	rs199520	0.21
19q13	Severe COPD	<i>EGLN2</i>	Blood	rs35755165	0.12
19q13	%LAA-950	<i>LILRA3</i>	Blood	rs103294	0.99

Biological relevance

Gene

Evidence

WNT3

- the Wnt-beta-catenin-TCF signaling pathway
- tetra-amelia syndrome
- down-regulated in smokers compared with nonsmokers (small airway epithelium)
- in strong LD with GWAS loci for FEV₁, FVC, interstitial lung disease, and idiopathic pulmonary fibrosis

LILRA3

- encoding a soluble leukocyte immunoglobulin like receptor for MHC class I
- in modest LD with variants suggestively associated with FEV₁/FVC

DCBLD1

- an integral component of cell membranes and binds to oligosaccharides
- in LD with variants associated with lung cancer

Pathway enrichment analyses

Phenotype	Tissue	Functional category	P value
Severe COPD	Lung	collagen binding involved in cell-matrix adhesion	2.70E-03
Severe COPD	Lung	proteasome core complex	2.80E-02
Severe COPD	Lung	translation factor activity, RNA binding	3.70E-02
%LAA-950	Blood	MHC class II protein complex	5.20E-05
%LAA-950	Blood	PD-1 signaling	6.30E-04
%LAA-950	Blood	Downstream TCR signaling	8.00E-04
%LAA-950	Blood	Asthma	4.80E-03
%LAA-950	Blood	T cell receptor signaling pathway	6.60E-03
Perc15	Lung	negative regulation of ERBB signaling pathway	4.50E-02

Acknowledgements

- Channing Division of Network Medicine
 - Edwin Silverman
 - Michael Cho
 - Jarrett Morrow, Peter Castaldi, and Craig Hersh
- Faculty of Medicine Siriraj Hospital
 - Somponnat Sampattavanich
 - Manop Pithukpakorn
 - Nitipatana Chierakul
 - Bhoom Suktitipat, Surakameth Mahasirimongkol, Wanna Thongnoppakhun, and Ratchadaporn Chanayat
- Collaborators
 - Ani Manichaikul, Yohan Bossé, and Farhad Hormozdiari
- Prince Mahidol Award Youth Program
- Faculty of Medicine Siriraj Hospital
- NHLBI grants
 - R01 HL113264
 - R01 HL086936
 - P01 HL114501
 - R01 HL089897 and R01 HL089856 (COPDGene)